

THE POST

Spring 2023 | Volume 10 | Issue 2

ON THE GROW

Trillium ovatum, commonly known as Western Trillium, blankets the woods and damp creek banks of Camp Lutherwood Oregon at this time each year. Its triumvirate — sets of three — petals bloom bright white before fading to pink as the weather warms. One of the first spring flowers, this hardy blossom makes a good symbol for Camp Lutherwood Oregon.

THESE GOALS ARE THE SHOWY BLOSSOMS EVERY MEMBER OF THE CAMP COMMUNITY WILL WITNESS AND ENJOY. EACH ONE IS FIRMLY ROOTED IN A RENEWED VISION AND MISSION, AND GROUNDED IN SHARED VALUES.

After completing a comprehensive strategic planning process, the organization is set to unfurl a series of goals that encompass everything from stream restoration to year-round retreats. These goals are the showy blossoms every member of the camp community will witness and enjoy. Each one is firmly rooted in a renewed vision and mission, and grounded in shared values.

More than 100 people participated in this year-long process. A group of past staff members, community members, volunteers, and board members worked together with a facilitator to hone this fresh vision of the future. Their work germinated six key focus



areas, each of which comes with its own set of goals and impacts.

Let's divide camp's six focus areas among the trillium's three petals: Leadership and Community, Communications and Development/Finance, and Program and Facilities. Each focus area grew out of ongoing work, with an interest in where the future will lead.

Leadership and Community

This petal includes goals for increasing the reach and deepening the capacity of camp. Community-focused goals include increased volunteer engagement and serving as a host site for community events, like when the Long Tom Watershed Council met at camp last fall. Efforts like this newsletter and email or social media posts already keep the camp community in the know. The

recently completed accessibility audit continues to inform the way physical spaces, digital services, and all communications are shaped to best serve this growing community.

At the same time, building a comprehensive leadership development and transition plan will sustain the community while nurturing the next generation of Lutherwood leaders. This includes providing professional development so camp staff can expand their skills while remaining part of the organization. Staff members and the Board of Directors will both benefit from an updated organizational structure designed for growth. One new leader joined the staff this winter: Director of Camp Operations Tyler Stewardson. Other roles in program design, fundraising, partnerships, and site

Continued on page 2

INSIDE

**MORE TO LOVE:
CAMP IS EXPANDING**

**UNCOVER THE WONDER
THIS SUMMER:
JOIN US FOR CAMP**



ON THE GROW

Continued from page 1

maintenance will also find their place in an updated structure.

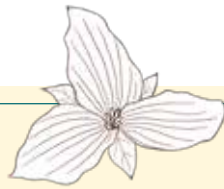
Communications and Development/Finance

The next petal focuses on widening the circle of volunteers, donors, congregations, and partner organizations to support camp's financial and relational health. This work will inspire meaningful financial involvement among current supporters, while expanding relationships with more diverse individuals, families, organizations, and ecumenical and Indigenous communities throughout Oregon.

By communicating with existing and new campers, creating an overall marketing plan, and redesigning its digital presence, Camp Lutherwood Oregon will attract guests and families from across the area. Last fall, camp's new Marketing and Communications Coordinator, Emily Tharp, joined the staff to begin shaping and executing these plans. You may have also noticed a fresh look on the camp website!

BUILDING ON THE LONG TRADITION OF QUALITY SUMMER PROGRAMMING, CAMP LUTHERWOOD OREGON AIMS TO BECOME A VIBRANT COMMUNITY OF SPIRITUALITY, OFFERING EXPERIENCES FOR A DIVERSE COMMUNITY YEAR-ROUND.

In the development and finance area, Camp Lutherwood Oregon intends to establish an endowment, expand planned giving, and seek out sponsorships. Revenue from the Guest Lodge will add to



The fresh mission statement provides a solid foundation, while core values drive camp toward its renewed vision.

MISSION

Camp Lutherwood Oregon creates intentional experiences for people to access the outdoors for restoration, play and growth.

VISION

Camp Lutherwood Oregon is a vibrant community of spirituality and hospitality, strengthened by diversity. Laughter and shared experiences generate a rich understanding of the deep connectedness of all people with one another and the earth, in order to build a world that is more caring, just and kind. Partners in outdoor leadership, land stewardship, faith exploration and youth development accompany us into the future.

this picture, joined by increased contributions from individuals like you. More than 100 households have contributed to the Capital Campaign, bringing camp about halfway to its \$4.2 million goal. Grant funding has grown significantly in the last two years as well, providing firm footing for the future.

Program and Facilities

Building on the long tradition of quality summer programming,

ACCESSIBILITY AND INCLUSION SIT AT THE CENTER OF ONGOING EFFORTS TO REPLACE, RESTORE, AND UPGRADE CAMP FACILITIES. BUILDING THE GUEST LODGE WILL BE KEY TO IMPLEMENTING THE MASTER SITE PLAN.

Camp Lutherwood Oregon aims to become a vibrant community of spirituality, offering experiences for a diverse community year-round. Staff are at work to strengthen the impact and relevance of summer programming and create year-round offerings for people of all ages. They intend to incorporate Indigenous voices into many aspects of their work, and eventually create a sacred space for spiritual formation. Plus, a grant from The Gray Family Foundation is funding further exploration of outdoor school programming and how this vital Oregon program might evolve in years to come. Programs that suit bilingual families, foster families, campers coping with trauma, and a widening range of communities will take shape before long.

Accessibility and inclusion sit at the center of ongoing efforts to replace, restore, and upgrade camp facilities. Building the guest lodge will be key to implementing the Master Site Plan.



FROM THE DIRECTOR



Friends,

The warmer and dryer weather is on its way and we are ready for it. We watch with excitement as the grounds around camp begin to reawaken after the dark and sleepy time of winter.

As you read through this newsletter, you will understand why we have so much to celebrate. We will be welcoming more groups back to Lutherwood this year and hosting Outdoor School for eight weeks this spring.

Lutherwood continues to emerge from the pandemic and rebuild our year-round staff. In January we welcomed Tyler Stewardson as full-time Director of Camp Operations. Tyler's position was identified during the Strategic Planning process as essential to fulfilling our shared vision of the future. After many hours

planning, the Board of Directors approved a new strategic plan that will focus our work over the next several years. Thank you to the many of you that contributed to the process. We worked diligently to incorporate many voices and ideas into the plan.

Thank you for your participation in the ministry of Camp Lutherwood Oregon. Please enjoy reading this newsletter, and I hope to see you around the campfire!

Andrea
Andrea Scofield

STAFF AND VOLUNTEERS WILL CONTINUE STEWARDING THE LAND THROUGH ENACTING THE HEALTHY FOREST PLAN AND BEGINNING STREAM RESTORATION PROJECTS.

Welcoming groups of all ages and backgrounds will require a close look at their distinct needs, including updated recreational spaces. A new network of fully accessible pathways, the recently completed bathhouse, and a cluster of cozy yurts are among the facilities most requested by guests that Lutherwood has constructed this year. In addition, purchasing 14 acres of additional property has positioned camp to achieve these goals even more effectively.

Staff and volunteers will continue stewarding the land through

enacting the Healthy Forest Plan and beginning stream restoration projects. Over the last two years, thinning too-dense parts of the forest has already opened the understory to native plants and greater biodiversity. A growing partnership with the local watershed council and government agencies will help this plan come to fruition in the coming years.

Together, these three petals create the kind of future where Camp Lutherwood Oregon is a vibrant community of spirituality and hospitality, strengthened by diversity. At camp, laughter and shared experiences generate a rich understanding of the deep connectedness of all people with one another and the earth, in order to build a world that is more caring, just and kind. Let's take a walk through the wildflowers.

A graphic with a dark blue background. At the top is a stylized illustration of a large orange pumpkin with a black stem, set against a yellow and orange background with falling leaves. Below the pumpkin, the text "Save the Date" is written in a large, white, cursive font. At the bottom, white text reads: "Join us on **Sunday, October 1st** at camp for an afternoon of good food, fall fun and an opportunity to support the ministry and mission of Camp Lutherwood Oregon. More details coming soon!"

Save
the
Date

Join us on **Sunday, October 1st** at camp for an afternoon of good food, fall fun and an opportunity to support the ministry and mission of Camp Lutherwood Oregon.

More details coming soon!

UNCOVER WONDER THIS SUMMER

Amazement seized all of them, and they glorified God and were filled with fear, saying, "We have seen incredible things today." (Luke 5:26)

Our summer 2023 program will focus on exploring with campers how God's wonder permeates the world around us. Through campfires, creation, games, songs, crafts, and outdoor cooking, campers will discover how to slow down and appreciate little things in life. Specialized activities for each age group, including offsite trips for some, will deepen campers' relationships with themselves, others, God, and the natural world.



Upper elementary campers can look forward to visiting a local farm, junior high campers will go canoeing at a nearby lake, and high school campers will

practice their teamwork in the treetops with a trip to a high ropes course. Summit campers get an additional challenge with a day of rock climbing, a day of rafting, and two nights of camping with Youth Dynamics Adventures!

All ages and activity levels are welcome at Family Camp—the most affordable, easiest way to plan family vacation. Each session offers classic camp activities, as well as focused adult sessions and games for the kiddos. If rest, renewal, and fun are on your wishlist, consider Women's Retreat for a weekend away.

BEST SUMMER JOB EVER!

"It gave him a new level of self-confidence. It taught him leadership. He's never seen himself in that role before, or that he could even be successful at it. That skill of leading a team, teaching, and having fun while doing it, will serve him in the future as he enters the professional work world."

—Parent of 2022 Summer Staffer

Young adult summer staffers share their love of camp with others! Pay starts at \$3,440 with housing and meals provided. Scan this code or visit lutherwoodoregon.org/employment for details. Applications are open now!



CAMP AGE GROUPS & SCHEDULE

Anticipated grade in the 2023-2024 school year

1st or 2nd grade: Mini Camp, July 9-11, July 23-25

3rd or 4th grade: Elementary Camp, July 9-13, July 30-August 3

5th or 6th grade: Upper Elementary Camp, July 9-13, July 30-August 3

6th through 12th grade: Compass Camp, August 6-10

7th through 9th grade: Jr. High Camp, July 16-20, July 30-August 3

10th through 12th grade: High School Camp, July 16-20 & Summit Camp, July 23-27

All ages: Friends & Family Camp, July 1-4, July 21-23

Adult (18+): Women's Weekend, July 28-30

Use this QR code or visit lutherwoodoregon.org/camp and register today!



STEPS TO REGISTER

1. Log in or set up your Ultra Camp account to complete medical forms, contact information, and waivers. (Short on time? Skip the forms and come back to them later!)
2. Choose a price that works best for you, and pay the \$100 non-refundable deposit.
3. **That's it!** Check your inbox for a Welcome Packet that includes a packing list and everything you need to know about camp!

TIERED PRICING & CAMPERSHIPS

Everyone deserves the chance to go to camp, regardless of financial resources. The tiered pricing system ensures each family can select the rate that works best! Camperships are available so that all may participate.

Tier 1: Most accurately reflects the cost of camp

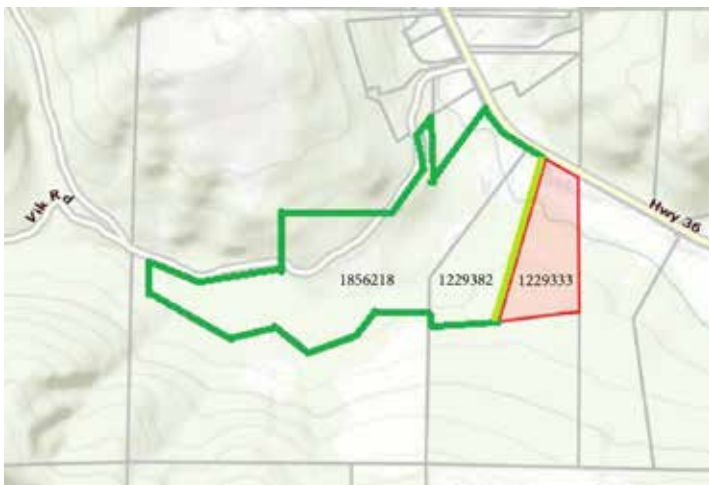
Tier 2: Slightly subsidized for those in need of support

Tier 3: Subsidized through contributions from donors



Find complete pricing information at lutherwoodoregon.org/camp.

MORE TO LOVE



Camp Lutherwood Oregon purchased 14.3 acres along the east side of its existing site last November. This new addition offers expanded staff housing, permanent access to the water tank, additional exploration across the creek and a potential future driveway from Highway 36.

The Camp Lutherwood Association approved the purchase, with the guidance and support of the Board of Directors. Individual donations and long-term financial planning made this expansion possible.

“With over 86 total acres now called Camp Lutherwood Oregon, we’re moving toward our goals for sustainable, accessible, year-round programming and another fantastic summer in 2023,” Executive Director Andrea Scofield said. “Starting in March 2022, we noticed the property was vacant again so I reached out to the owners, who live in Texas, about the possibility of acquiring it. The property was in disrepair and needed some major TLC.”

The added space offers ample opportunity for summer campers to explore new areas of the forest and creek. Plus, starting this summer, year-round staff members will have access to additional housing.

Restoration is in full swing, including a complete remodel of the main house. Clearing debris and overgrowth will soon reveal the full potential of this exciting new space. Staff and board members are working with Land Use Consultants to imagine how the new and existing properties will mesh. Stay tuned for what happens next!

Check out this video from Executive Director, Andrea Scofield and join the excitement for all the possibilities this new property brings.



MEET THE STAFF

Several new faces have joined Camp Lutherwood Oregon this winter. Read on to get to know Tyler, Emily, and Sara!

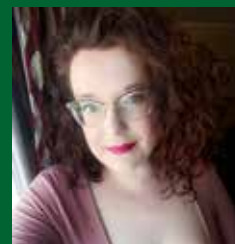
Tyler Stewardson, Director of Camp Operations (Logan, Utah)

Tyler grew up spending his summers at camp up in the Sawtooth Mountains of Idaho. He values connecting youth with the nature around them and showing them that growing in their faith can be fun. Tyler works to ensure Lutherwood’s site is ready and welcoming to all guests. His favorite activities include backpacking, designing his own outdoor gear, and playing basketball.



Emily Tharp, Marketing & Communications Coordinator (Springfield, Missouri)

Emily lives with her husband and son in Springfield, Missouri. She’s been working in marketing and communications for nonprofits for most of her career and loves being able to use her skills and talents to help others.



She works to bring cohesion to all the marketing and communications projects that promote camp and its programs. After work, she enjoys sitting on the front porch with her dog Bandit and helping him bark at the neighborhood kids.

Rev. Sara Gross Samuelson, Outreach Coordinator (Milwaukie, Oregon)

Sara (she/her/ella) lives with her husband Josh and their young son. Sara has a long history working in outdoor ministry and public education, as well as being an ordained pastor in the ELCA. She considers Lutherwood the most extraordinary sanctuary she’s ever served in. Sara works to weave Lutherwood into the wild web of work around equitable access to rest, play and resilience-building. Along with her hours parenting and working, she maintains a complicated relationship with her book-buying habits.



Camp Lutherwood Oregon
22960 Highway 36
Cheshire, Oregon 97419



NONPROFIT ORG
U.S. POSTAGE
PAID
EUGENE, OR
PERMIT NO. 681

READY AND WELCOMING

Volunteers and staff have been hard at work, tackling every project thrown their way in preparation for a new camp season.

The two new 20-foot yurts have been built to provide additional housing for guests, summer staff, and necessary programming space. The existing 24-foot yurt received an HVAC unit for heat, air conditioning, and dehumidifying capability, thanks to a generous grant from the Juan Young Trust.

The new bathhouse has been constructed alongside the upper cabins, featuring four new bathrooms, three of which are fully ADA accessible. Each of the four stalls includes a sink, shower, and toilet with a locking door. This bathhouse will be essential in providing



additional hygienic space that previously required a significant walk to the dining hall or pool house.

Get a close-up look at these and other projects at Spring Work Days on May 6 and June 3!

SPRING WORK DAYS

Spend a Saturday (9 a.m. to 3 p.m.) volunteering with friends or family to get camp spruced up for summer. Work Days are a great opportunity to introduce new campers to Lutherwood and get more familiar with camp. Lunch is provided.



Scan this code to RSVP for May 6

Open house and tours for first-time and prospective campers!



Scan this code to RSVP for June 3

Dedication ceremony for new property and new buildings!

